

User guide

Version 2024.27

Water park Pipe Inspection



Contents:

Getting Started 4

Turning on the Leo Rover.....	4
Controlling the robot with a controller	5
Log in to Karelics.cloud.....	6
Project screen.....	7

Operating 8


Robot remote control & video recording	8
Robot remote control & video recording icons.....	9
Pipe Inspections history.....	10
Video playback	11
Selected Robot sidebar	12

Safe Robot Operation 13

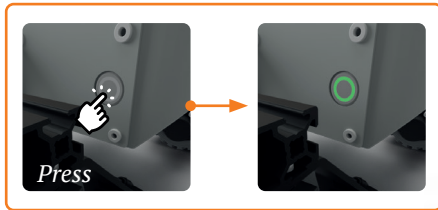
Controller Lock	13
Robot's charging.....	14


Getting Started

Turning on the Leo Rover

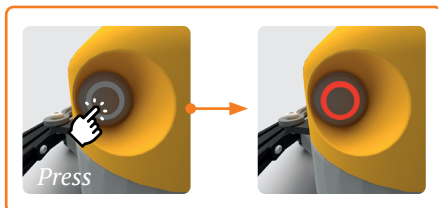
 For **charging** see page 14


1. Turn On Robot



 If the robot is on the charging station, the indicator may **flash green**. This means the robot is off and needs to be turned on.


2. Turn On Karelis Payload



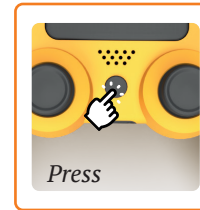
 **To turn off the robot**, press these buttons again. The light indicators should turn off.

Getting Started

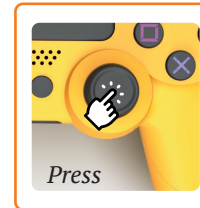
Controlling the robot with a controller

 For **Safe Robot Operation** see page 13

1. Turn On Controller




2. Remove the control lock



3. Start controlling the robot

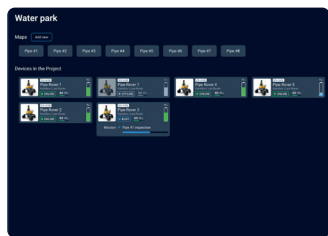
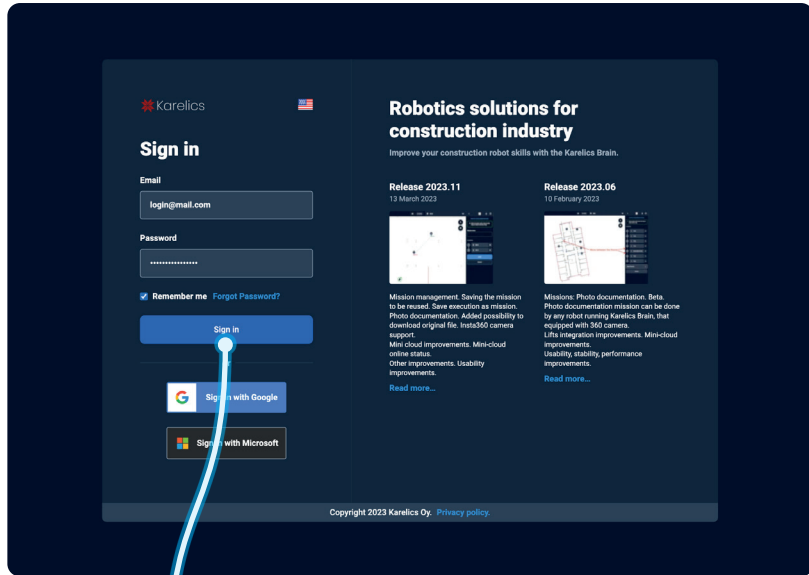


 **To turn off the controller**, press and hold the PS button for 20 seconds.



Getting Started

Log in to Karelics.cloud



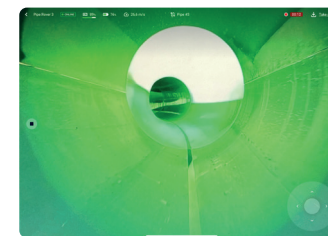
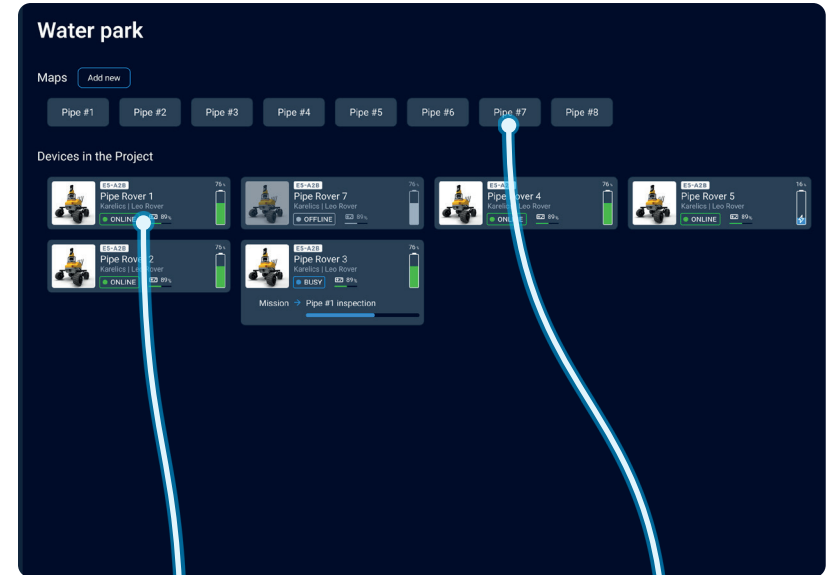
Project screen
Page 7



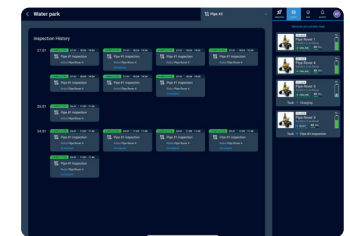
If you're having trouble logging in, contact our support team at support@karelics.fi

Getting Started

Project screen



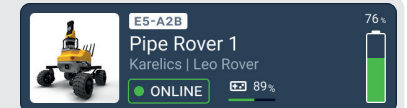
Robot remote control & video recording
Page 8



Pipe Inspections history
Page 10

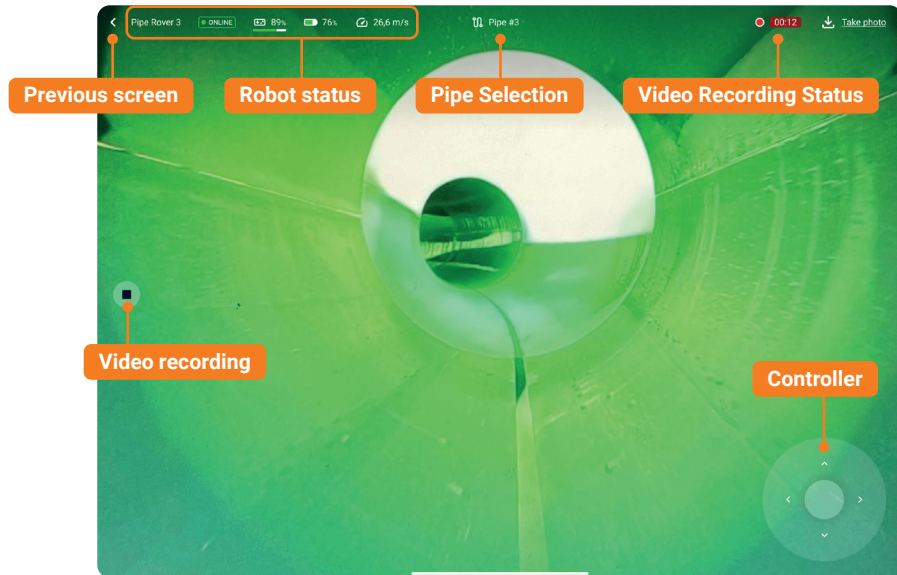





For remote control, the Robot must have an **Online** status.



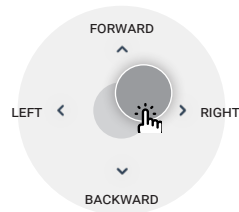
Operating


Robot remote control & video recording



1. Make sure you have selected the **Correct Pipe**.
Recorded video will be attached to the selected pipe.
2. Press the **Video Recording** button 
The **Status** and **Duration** of the recording will appear  

3. Control the Robot remotely using virtual controller on the screen.



4. After driving through the pipe press the **Stop Video Recording** button 
5. If necessary, **Change the Pipe** and start a new recording.

Operating






Robot remote control & video recording icons

Robot status

ROBOT NAME

Pipe Rover 3

ROBOT STATUS

 ONLINE  OFFLINE  UNHEALTHY
 UPDATING  BUSY

CONTROLLER CHARGING

 89%

ROBOT CHARGING

 76%

ROBOT SPEED

 7,6 m/s

Pipe Selection

CURRENT PIPE NAME

 Pipe #3



A popup window for selecting the desired pipe.

Video Recording

START RECORDING



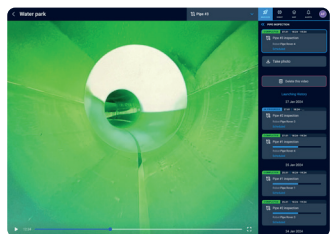
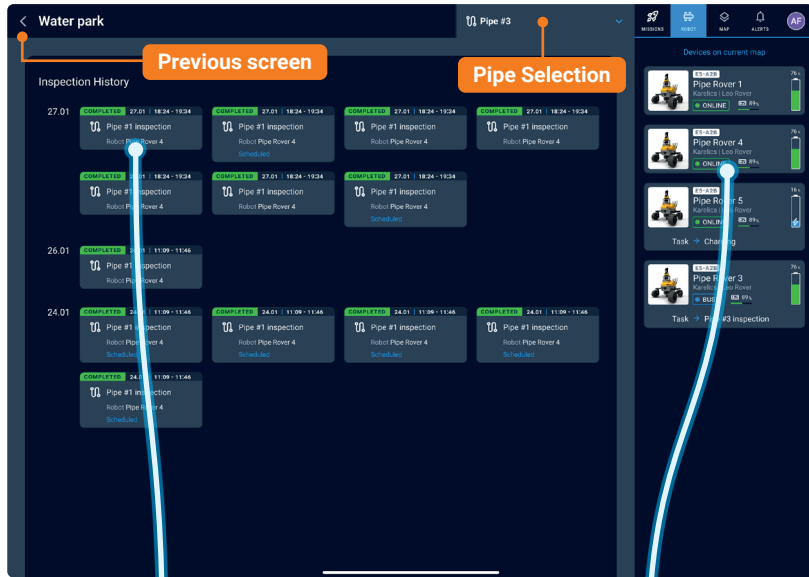
STOP RECORDING



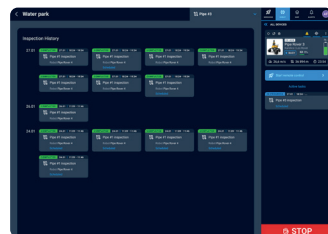
RECORDING STATUS

  00:12

Pipe Inspections history

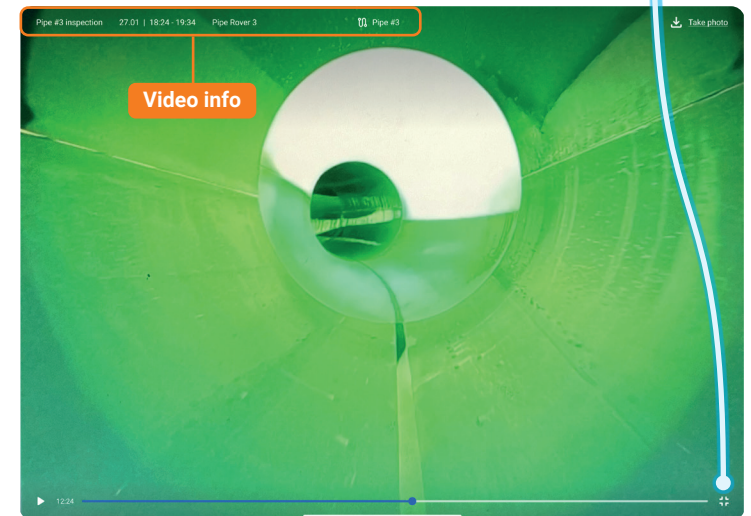
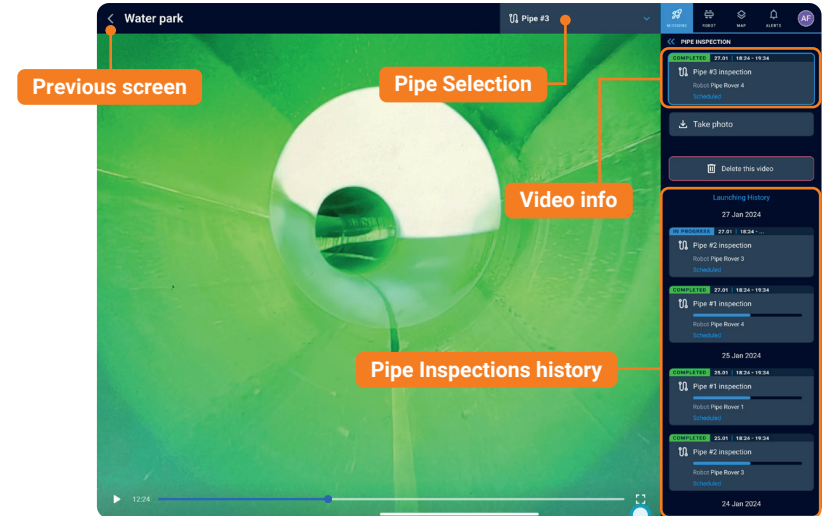


Video playback
Page 11



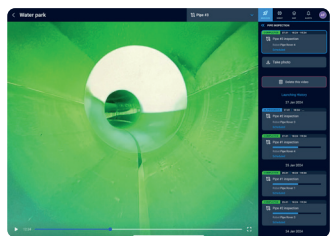
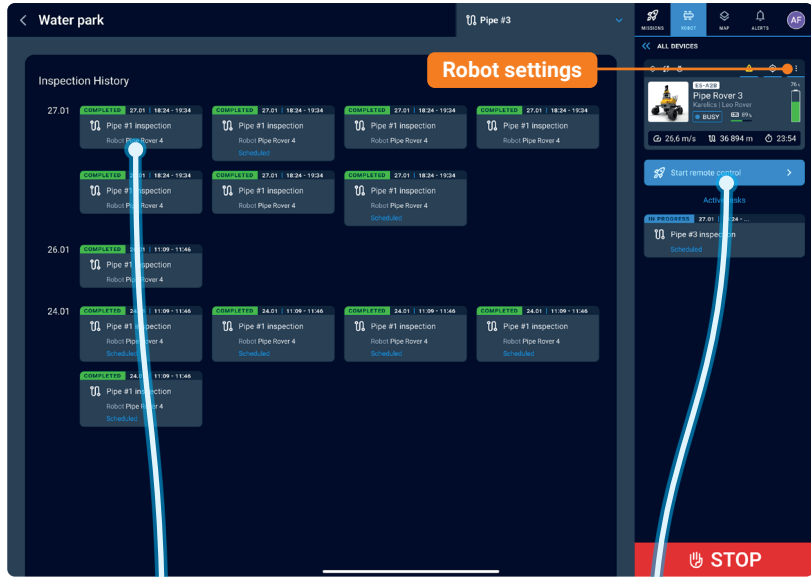
Selected Robot sidebar
Page 12

Video playback

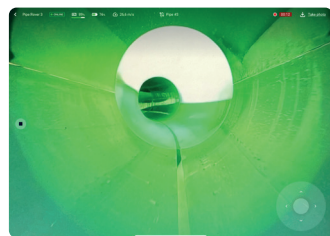


Operating

Selected Robot sidebar



Video playback
Page 11



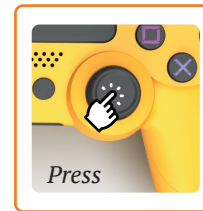
Robot remote control & video recording
Page 8

Safe Robot Operation

Controller Lock

! Always when you are not using the controller that is turned on, lock it, this will prevent unexpected movements of the robot. To make sure that controller is locked check that the light is blue.

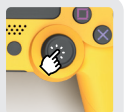
Lock Controller



Wait until it lights up bright blue



i To unlock the controller again, press the same button once more and wait until the green light comes on.

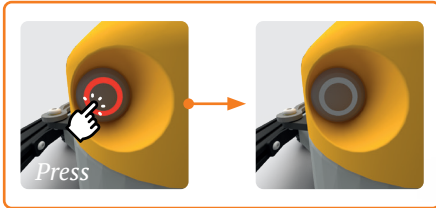


Safe Robot Operation

Robot's charging

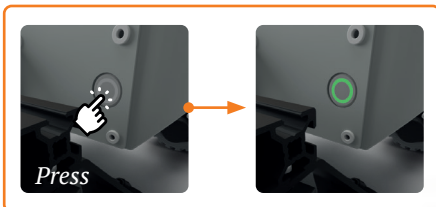
! To charge the robot the payload should be turned off and the robot base should be turned on.

1. Turn Off Karelis Payload



i If the payload is **already turned off** (indicator is not lit), skip this step.

2. Turn On Robot

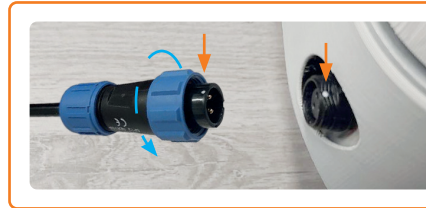


i If the robot is **already turned on** (the indicator is lit green), skip this step.



Safe Robot Operation

3. Connect the charger



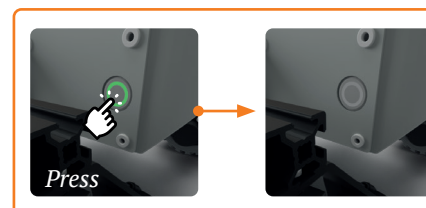
i There are **white dots on the top** of the connector and charging port for easy connection.



4. Charging process



5. After charging is completed switch Off the base





Kauppakatu 23b B 1, 80100 Joensuu, Finland

+358 50 355 0666

info@karelics.fi

karelics.fi